

Light efficiency:

46 Lumen/Watt

Light quality:

CRI: 87.9

Color temperature:

9439 K

Output: 18068 lm

Peak: 134375 cd

Power: 389 W

PF: 1.0

No photo

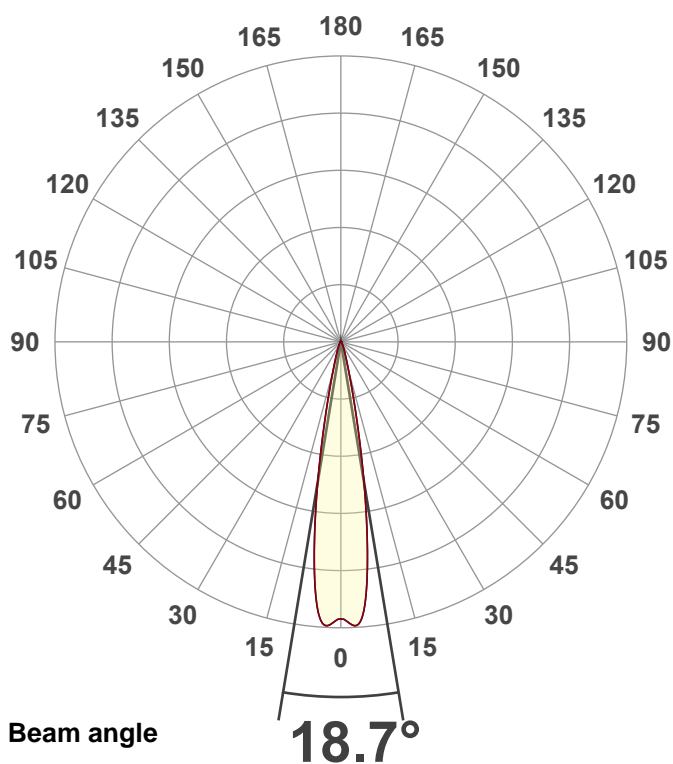
Product name:

40 Hex Panel IP (Full On,8900K)

Item number:

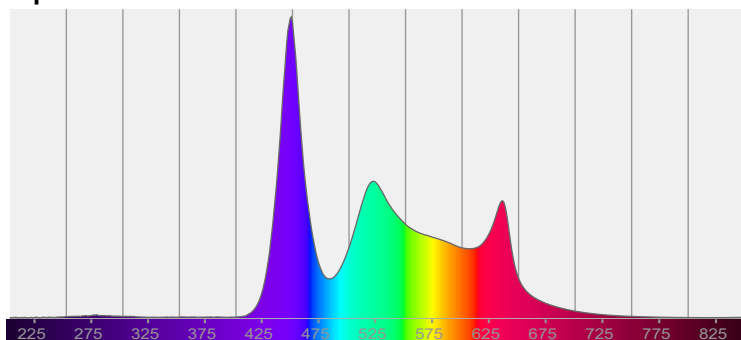
Date and time:

10/9/2025 3:56:00 PM



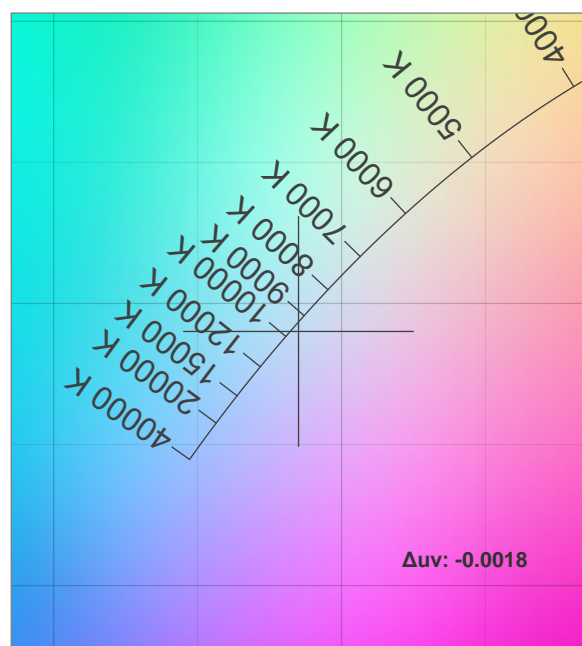
CIE 1931
x: 0.285
y: 0.290

Spectra



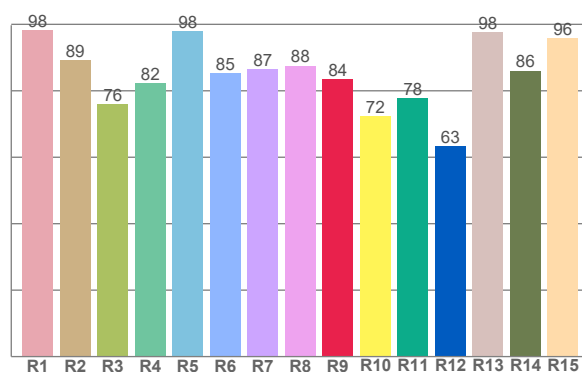
Power

Voltage: 115 V
Current: 3.38 A
Frequency: 0 Hz



CIE 1931 ZOOM

CRI: 87.9 (R1-R8)



R1	R2	R3	R4	R5	R6	R7	R8	R9	R10	R11	R12	R13	R14	R15
98.2	89.2	75.9	82.2	97.9	85.3	86.6	87.6	83.6	72.4	77.8	63.3	97.6	86.1	95.8

C1	C2	C3	C4	C5	C6	C7	C8	C9	C10	C11	C12	C13	C14	C15	C16
92.7	96.7	91.2	84.7	84.3	87.0	91.3	89.0	89.8	80.7	62.3	80.9	82.0	83.9	83.2	91.3

CQS Q values														
Q1	Q2	Q3	Q4	Q5	Q6	Q7	Q8	Q9	Q10	Q11	Q12	Q13	Q14	Q15
99.1	93.6	76.3	79.9	92.5	90.3	93.6	95.9	85.6	83.5	88.3	93.5	99.2	98.5	99.1

CQS: 88.6

Quarter	CQS Score
Q1	99
Q2	94
Q3	76
Q4	80
Q5	92
Q6	90
Q7	94
Q8	96
Q9	86
Q10	83
Q11	88
Q12	94
Q13	99
Q14	99
Q15	99

Color parameters

Color temperature	Color rendering index	Red component	Color fidelity	Color gamut	Color quality scale	Color coordinate cie 1931	Color coordinate cie 1931	Color coordinate	Color coordinate	Color diviation from black body
CCT	CRI	CRI R9	TM30 Rf	TM30 Rg	CQS	x	y	u	v	Δuv
9439 K	87.9	83.6	85.9	105.9	88.8	0.285	0.290	0.193	0.294	-0.0018

TM-30 details

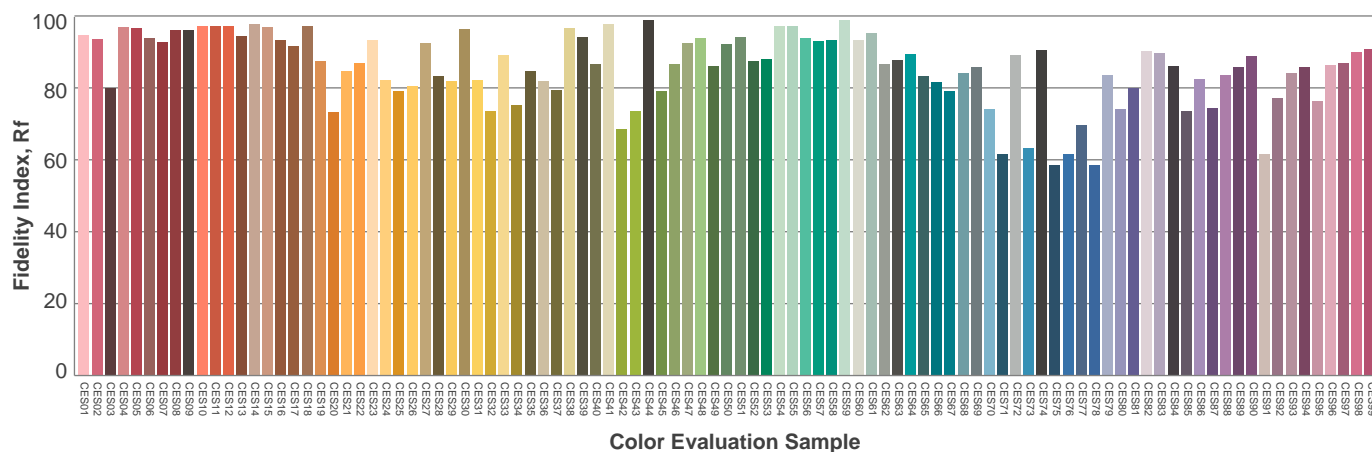
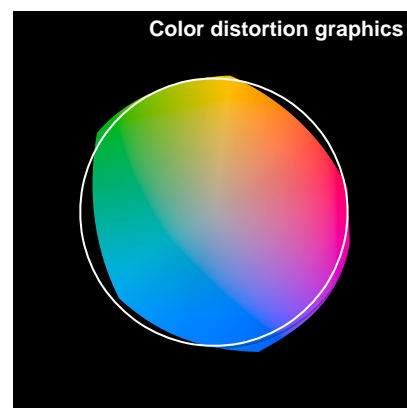
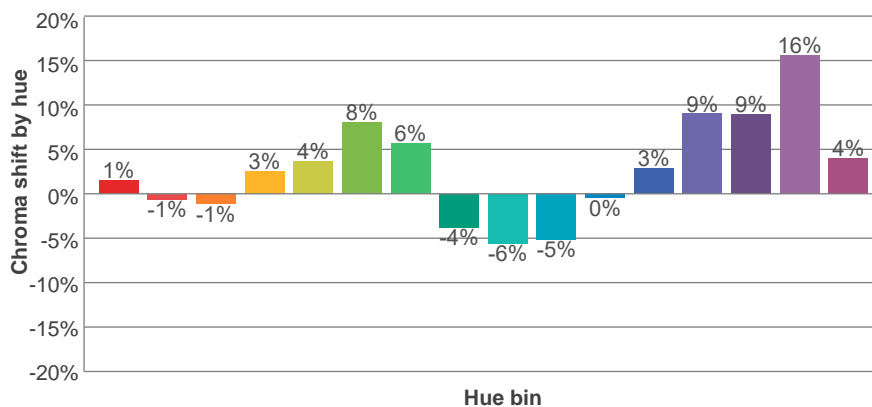
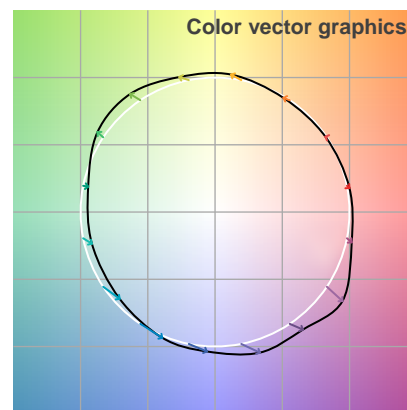
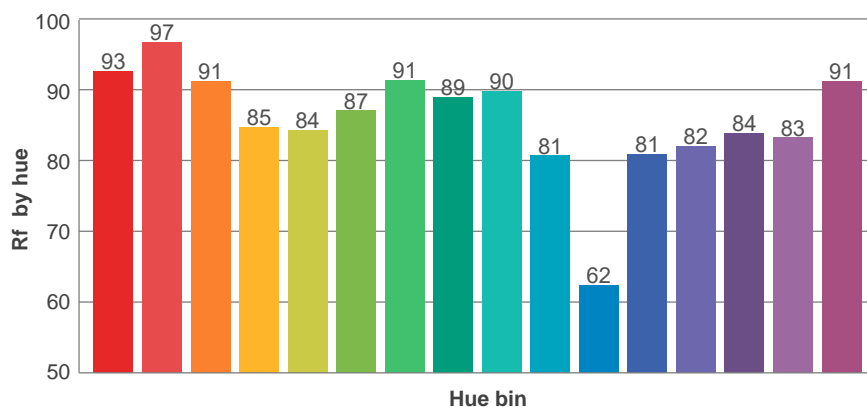
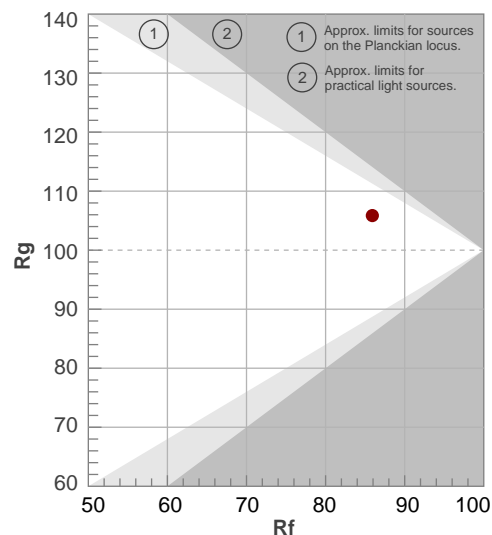
Rf 85.9

Fidelity index Rf

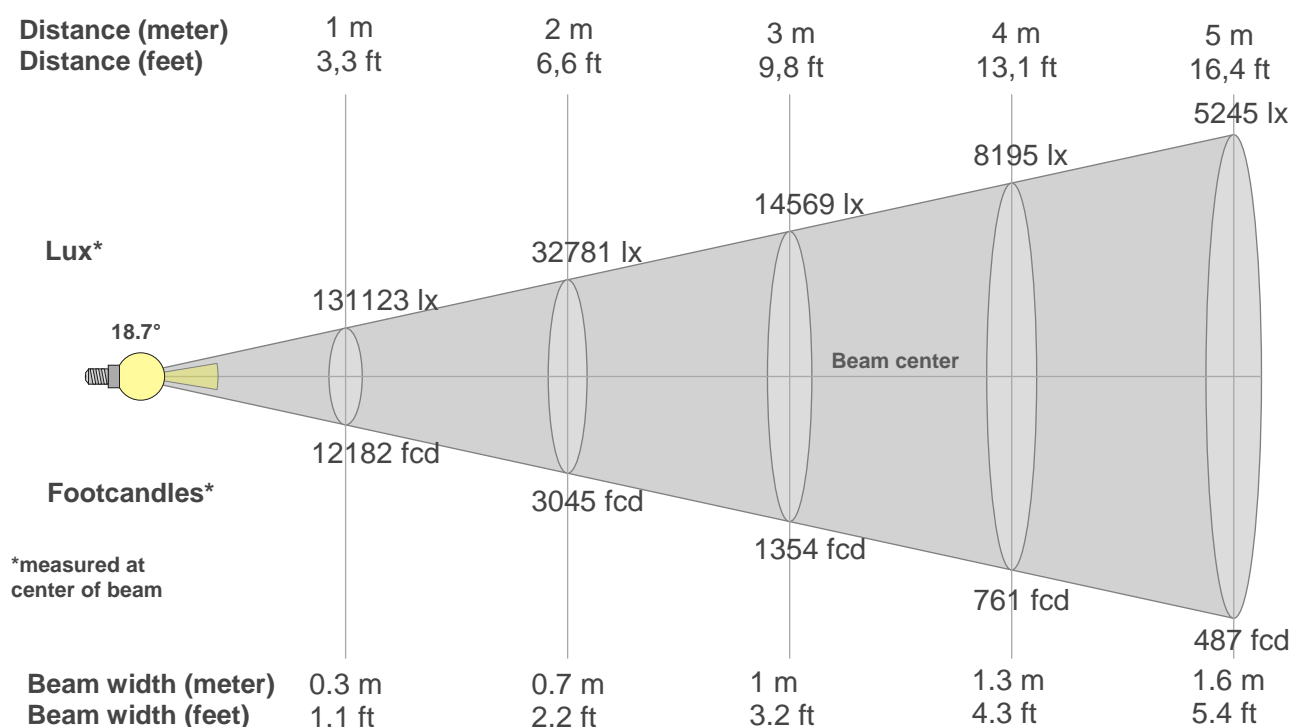
Rg 105.9

Gamut index Rg

Hue Bin	R _f	Shifts (%)	
		Chroma	Hue
1	93	1%	-2%
2	97	-1%	1%
3	91	-1%	5%
4	85	3%	8%
5	84	4%	6%
6	87	8%	4%
7	91	6%	-1%
8	89	-4%	0%
9	90	-6%	5%
10	81	-5%	14%
11	62	0%	19%
12	81	3%	14%
13	82	9%	12%
14	84	9%	6%
15	83	16%	-2%
16	91	4%	-2%



Beam details



Beam intensities from 1-20m

1m	2m	3m	4m	5m	6m	7m	8m	9m	10m	11m	12m	13m	14m	15m	16m	17m	18m	19m	20m
3.3ft	6.6ft	9.8ft	13.1ft	16.4ft	19.7ft	23ft	26.2ft	29.5ft	32.8ft	36.1ft	39.4ft	42.7ft	45.9ft	49.2ft	52.5ft	55.8ft	59.1ft	62.3ft	65.6ft
131123lx	32781lx	14569lx	8195lx	5245lx	3642lx	2676lx	2049lx	1619lx	1311lx	1084lx	911lx	776lx	669lx	583lx	512lx	454lx	405lx	363lx	328lx
12181.8 fcd	3045.4 fcd	1353.5 fcd	761.4 fcd	487.3 fcd	338.4 fcd	248.6 fcd	190.3 fcd	150.4 fcd	121.8 fcd	100.7 fcd	84.6 fcd	72.1 fcd	62.2 fcd	54.1 fcd	47.6 fcd	42.2 fcd	37.6 fcd	33.7 fcd	30.5 fcd

Intensities in 0° c-plane

0°	1°	2°	3°	4°	5°	6°	7°	8°	9°	10°	11°	12°	13°	14°	15°	16°	17°	18°	19°
131k	132k	134k	134k	132k	127k	116k	103k	88k	73k	58k	44k	33k	25k	19k	14k	11k	9k	8k	6k
100%	101%	102%	102%	101%	97%	89%	79%	67%	55%	44%	34%	25%	19%	14%	11%	9%	7%	6%	5%

Intensities in 90° c-plane

0°	1°	2°	3°	4°	5°	6°	7°	8°	9°	10°	11°	12°	13°	14°	15°	16°	17°	18°	19°
131k	132k	134k	134k	132k	127k	116k	103k	88k	73k	58k	44k	33k	25k	19k	14k	11k	9k	8k	6k
100%	101%	102%	102%	101%	97%	89%	79%	67%	55%	44%	34%	25%	19%	14%	11%	9%	7%	6%	5%

Intensities in 180° c-plane

0°	1°	2°	3°	4°	5°	6°	7°	8°	9°	10°	11°	12°	13°	14°	15°	16°	17°	18°	19°
131k	132k	134k	134k	132k	127k	116k	103k	88k	73k	58k	44k	33k	25k	19k	14k	11k	9k	8k	6k
100%	101%	102%	102%	101%	97%	89%	79%	67%	55%	44%	34%	25%	19%	14%	11%	9%	7%	6%	5%

Intensities in 270° c-plane

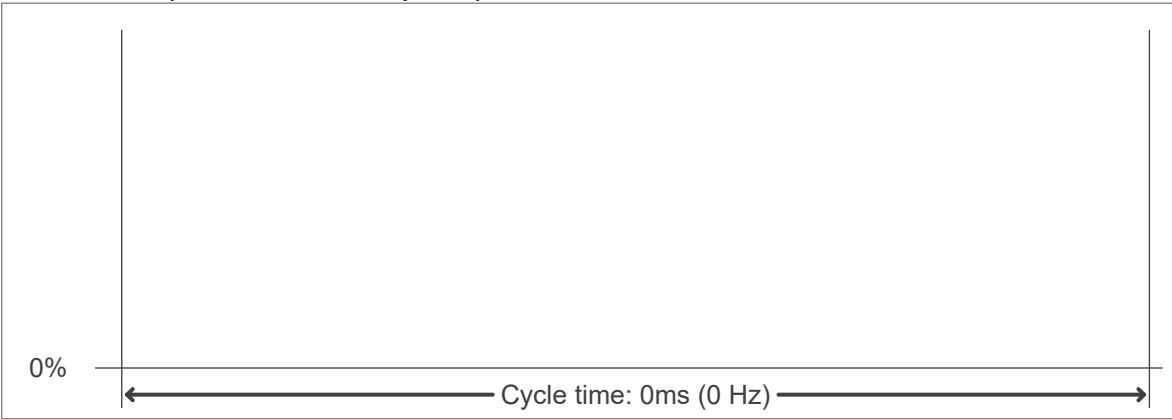
0°	1°	2°	3°	4°	5°	6°	7°	8°	9°	10°	11°	12°	13°	14°	15°	16°	17°	18°	19°
131k	132k	134k	134k	132k	127k	116k	103k	88k	73k	58k	44k	33k	25k	19k	14k	11k	9k	8k	6k
100%	101%	102%	102%	101%	97%	89%	79%	67%	55%	44%	34%	25%	19%	14%	11%	9%	7%	6%	5%

Beam angle 50%	Field angle 10%	Cutoff angle 2,5%	Intensity ratio in 120° cone	Intensity ratio in 90° cone
18.7°	30.6°	47°	96.3%	93.4%

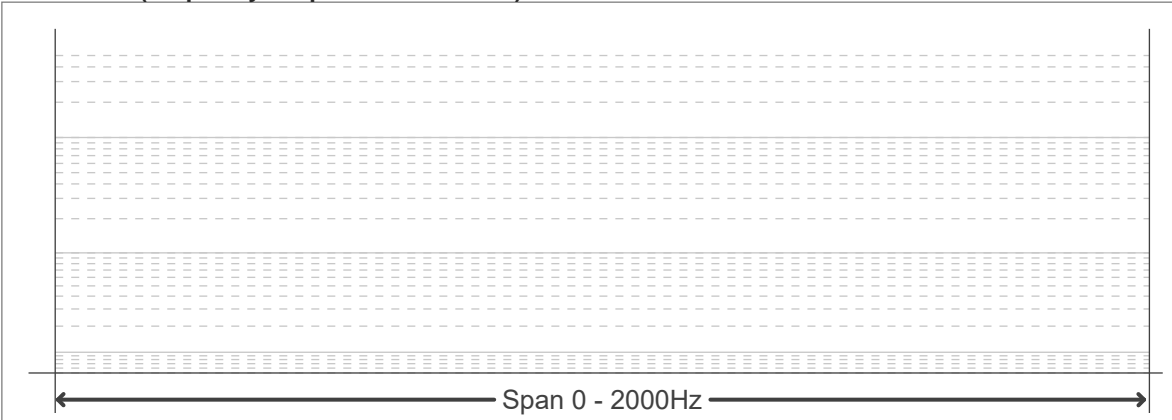
Flicker curve (complete sampled flicker signal)



Flicker frame (frame of one flicker period)



Flicker FFT (frequency scope of flicker curve)



Flicker results:

Flicker frequency:		n/a Hz	
Flicker index:	n/a	JA8/10 40Hz	n/a %
Flicker percentage:	n/a %	JA8/10 90Hz	n/a %
SVM: (Visual flicker)	n/a	JA8/10 200Hz	n/a %
PstLM	n/a	JA8/10 400Hz	n/a %
Mp	n/a	JA8/10 1000Hz	n/a %

Flicker conditions:

Sample rate:	n/a samples/second
--------------	--------------------